

SM74HC04

Overview

SM74HC04 is a high speed CMOS devices, compatible with low power Schottky TTL Circuit 74LS04.

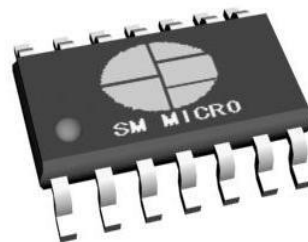
Features

- use CMOS Technology
- Wide voltage operating range: 3.0V—5.0V
- 6 Channel Inverter
- Package: SOP14

Application Areas

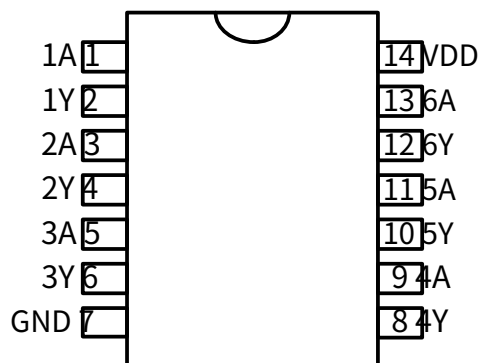
- Suitable for signal inversion applications in digital circuits

Package Diagram



SOP14

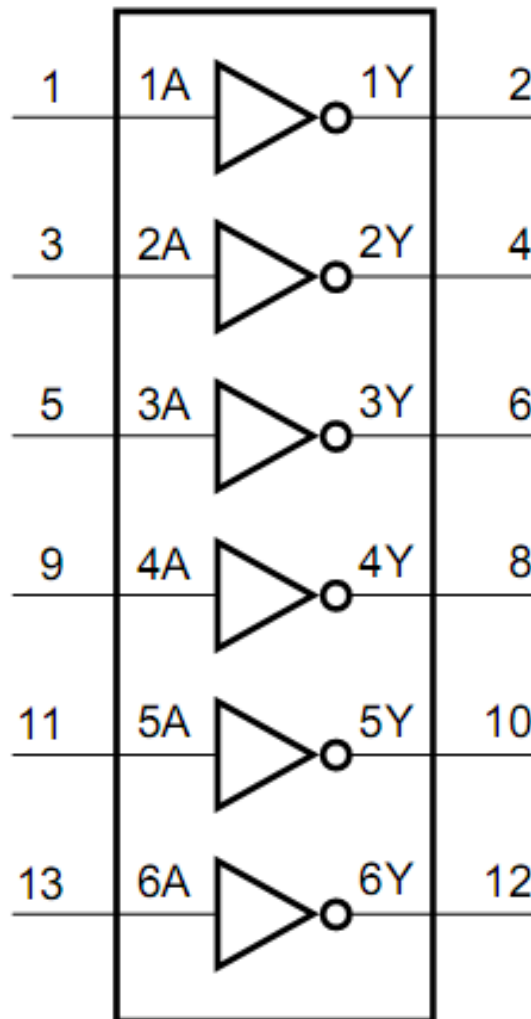
Pin Definition



Pin Description

name	Functional Description	Pin Number
1A-6A	Data Entry	1,3,5,9,11,13
1Y-6Y	Data Output	2,4,6,8,10,12
VDD	Logic Power Supply	14
GND	Logically	7

Logic diagram



Electrical parameters

Limit parameters (Ta = 25°C)

parameter	symbol	scope	unit
Logic supply voltage	VDD	-0.5—+7.0	V
Logic input voltage	VI1	- 0.5—VDD + 0.5	V
Power loss	PD	<400	mW
Operating temperature	Topt	-40—+80	°C
Storage temperature	Tsj	-50—+150	°C

Normal operating range (Ta =25°C)

parameter	symbol	Minimum	typical	maximum	unit	Test conditions
Logic supply voltage	VDD	3.0	5.0	5.5	V	
High level input voltage	VIH	3.0	-	-	V	VDD=5.0V
Low level input voltage	VIL	-	-	2.0	V	VDD=5.0V

DC Characteristics:

parameter	symbol	Minimum	typical	maximum	unit	Test conditions
High level output voltage	VOH	4.9			V	VDD=5.0V
Low level output voltage	VOL			0.1	V	VDD=5.0V
Quiescent current consumption	IDD				uA	VDD=6.0V
Current source output	IOH	- twenty four		- 38	mA	VDD=5.0V
Current Sink Output	IOL	45		62	mA	VDD=5.0V

AC characteristics:

parameter	symbol	Minimum	typical	maximum	unit	Test conditions
Output rise delay	tPLH		7		ns	VDD=5.0V f=250KHz CL=15pF The waveform is shown in Figure 1 below. The test circuit is shown in Figure 2
Output falling delay	tPHL		6		ns	
Output rising edge	tTLH		8		ns	
Output falling edge	tTHL		4		ns	

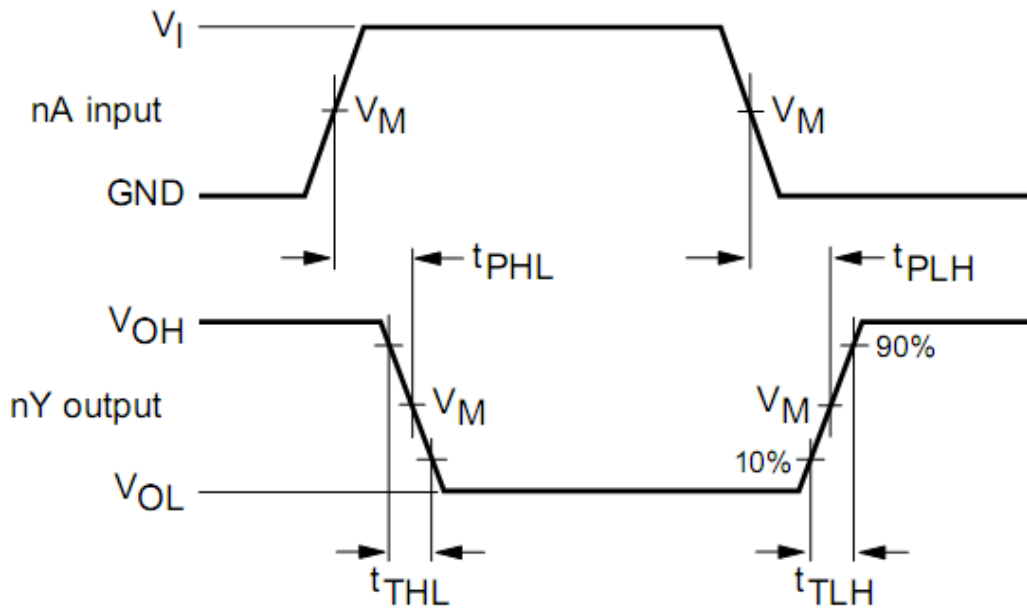


Figure 1

Note: V_M For signal 50% Test point voltage

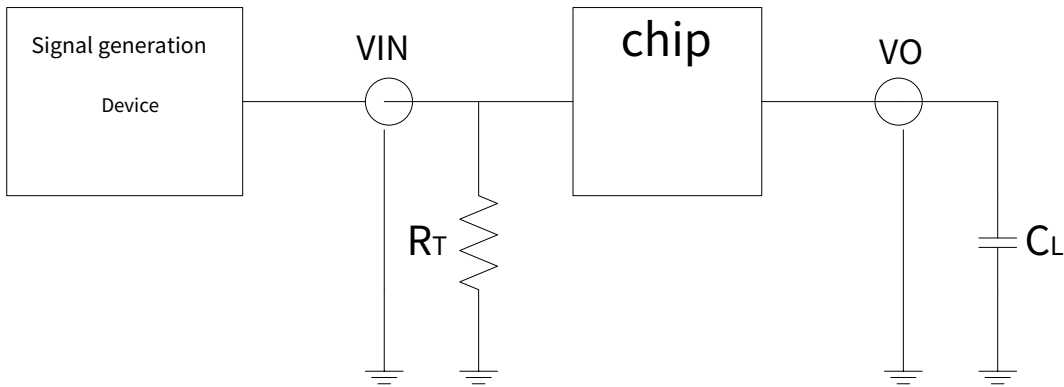


Figure 2

Note: R_T Matching resistor for signal generator

Package

SOP14

X-ON Electronics

Largest Supplier of Electrical and Electronic Components

Click to view similar products for[Buffers & Line Drivers](#)***category:***

Click to view products by[Sunmoon](#)***manufacturer:***

Other similar products are found below :

[LXV200-024SW](#) [CY2DP1502ZXI](#) [74AUP2G34FW3-7](#) [HEF4043BP](#) [NL17SG125DFT2G](#) [NLV27WZ125USG](#) [CD4041UBE](#) [CY2CP1504ZXC](#)
[CY2DP1510AXC](#) [028192B](#) [042140C](#) [051117G](#) [07051](#) [9XB](#) [NL17SG07DFT2G](#) [NL17SZ07P5T5G](#) [NLU1GT126AMUTCG](#) [74AUP1G17FW5-7](#)
[74LVC2G17FW4-7](#) [CY2DP1504ZXI](#) [CD4502BE](#) [74LVCE1G126FZ4-7](#) [74LVC1G125FW4-7](#) [NL17SH17P5T5G](#) [NLV17SZ07DFT2G](#)
[NC7WZ17FHX](#) [74HCT126T14-13](#) [74LVC2G34FW4-7](#) [NL17SH125P5T5G](#) [74VHC9126FT\(BJ\)](#) [NLV37WZ07USG](#) [RHRXH162244K1](#)
[74AUP1G34FW5-7](#) [74AUP1G07FW5-7](#) [74LVC1G126FW4-7](#) [74LVC2G126RA3-7](#) [NLX2G17CMUTCG](#) [74LVCE1G125FZ4-7](#) [Le87501NQC](#)
[74AUP1G126FW5-7](#) [TC74HC4050AP\(F\)](#) [74LVCE1G07FZ4-7](#) [NLX3G16DMUTCG](#) [NLX2G06AMUTCG](#) [NLVVHC1G50DFT2G](#)
[NLU2G17AMUTCG](#) [LE87100NQC](#) [LE87100NQCT](#) [LE87285NQC](#) [LE87285NQCT](#) [LE87290YQC](#)
