

# User Manual CAM-S2(EN)



Wi-Fi Smart Security Camera

User Manual V1.0

## Introduction

The CAM Slim Gen2 is a Wi-Fi security camera with 1080P resolution, capable of capturing every detail clearly. It supports real-time viewing of home situations and remote conversations on the app. You can push messages to the app in time by setting motion detection messages, and share them with your family.

FHD

1080P Live View



Alerts



Two-way Audio



Human Detection



IR Night Vision



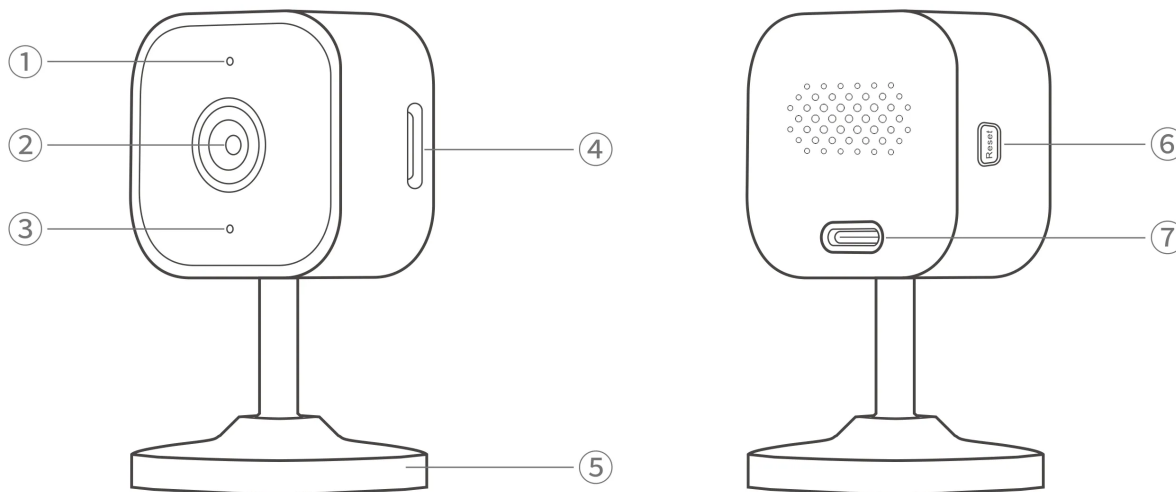
Camera Hibernation



Support Cloud  
Storage



RTSP Protocol



① LED indicator	⑤ Base
② Camera lens	⑥ Reset button • Long press the button for 5 seconds (device emits a "beep" sound): The device enters pairing mode (pairing duration: 30 minutes).
③ Microphone	⑦ Power input interface (Type-C)
④ TF card slot	

## Instruction of LED Indicator Status

LED indicator status	Status instruction
Flashes two short and one long	Device is in pairing mode (Single press reset button to exit pairing mode).

Keeps on	Online
Flashes once quickly and lights up strongly at the same time	Device exits the network configuration state after being offline, network exception, or failure to connect to the network.
Flashes twice rapidly	Device detects TF card (device will emit two "beep" sounds).
Flashes once rapidly	Device being watched

## Audio Alerts

Audio Alerts	Device Status
Single "beep" sound (Press and hold reset button for 5 seconds)	Device is in pairing mode.
Double "beep beep" sounds	Device detects TF card.

## Compatible Voice Assistants



## Specification

Model	CAM-S2
Input	5V==1A
Interface type	Type-C
Lens aperture	F2.0
Resolution	1920x1080
Camera pixels	2 million pixels

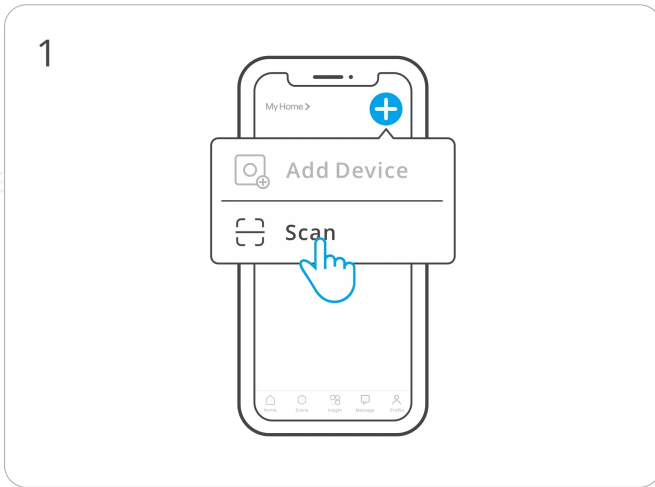
Lens focal length	3.8mm
Video compression standard	H.264
Camera lens angle	100°
Storage methods	Cloud storage and TF card (Max.128GB for TF card)
Wireless connection	Wi-Fi IEEE 802.11 b/g/n 2.4GHz
Net weight	65g (Accessories not included)
Product dimension	48x46x86.5mm
Colour	White
Casing materials	PC+ABS
Applicable place	Indoor
Working temperature	-10°C~40°C
Working humidity	5%~95% RH, non-condensing
Certification	CE/FCC/RoHS
Executive standard	IEC/EN 62368-1

## Download the eWeLink App

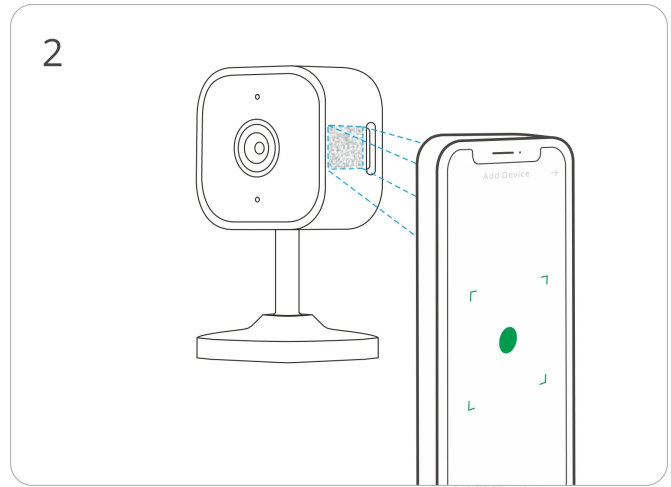
Please download the "eWeLink" app from [Google Play Store](#) or [Apple App Store](#).



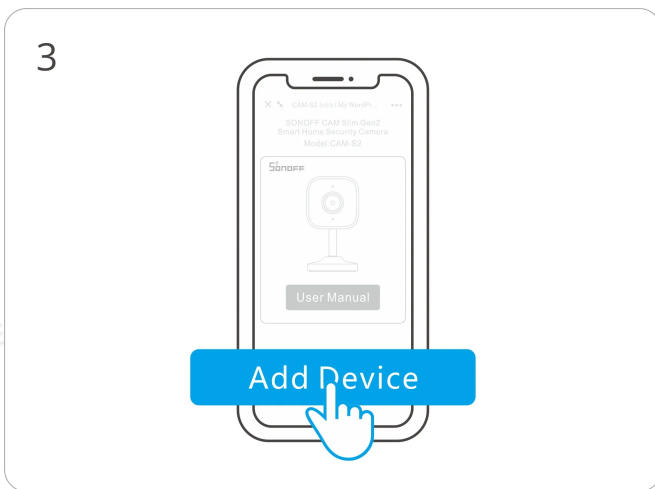
Scan QR Code to Add Device



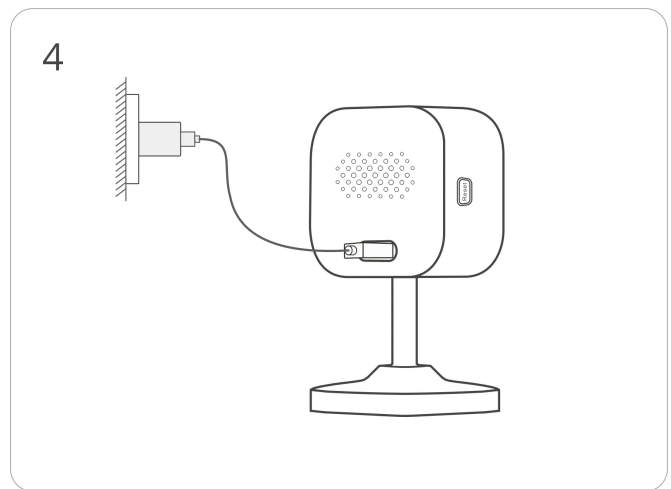
Enter "Scan".



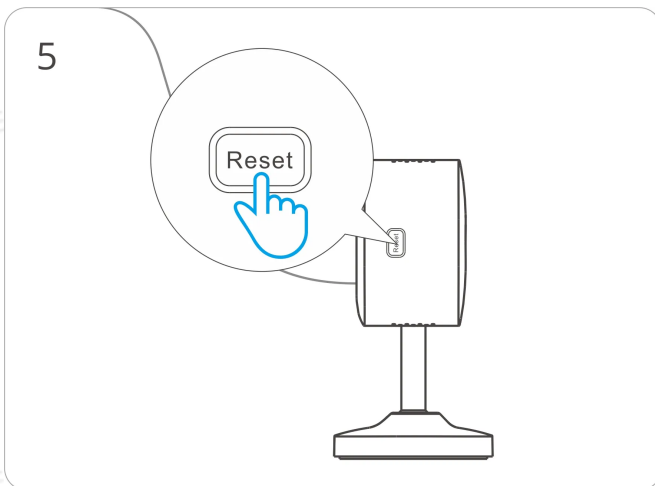
Scan the QR code on the device.



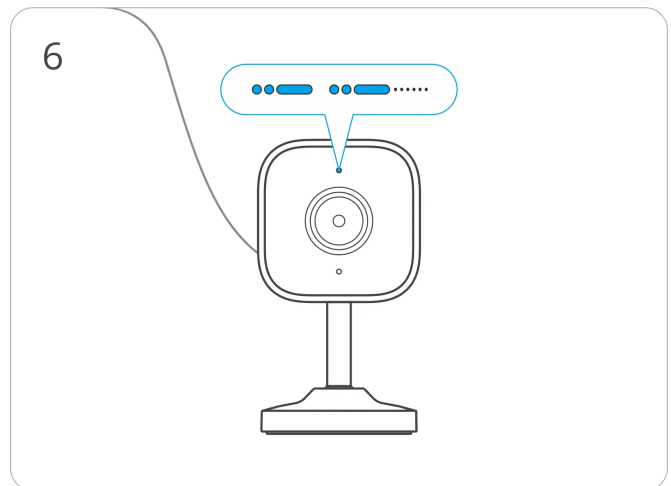
Select "Add Device".



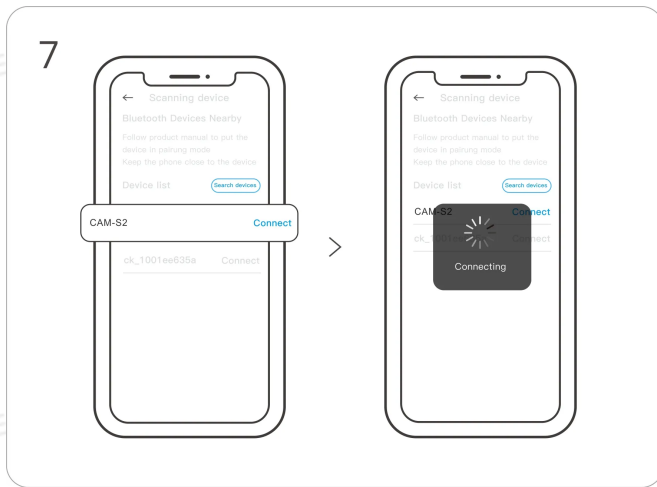
Power on the device



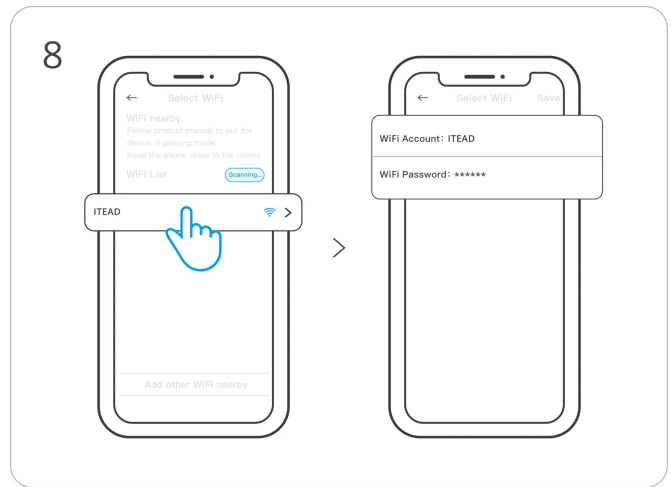
Long press the reset button for 5 seconds.



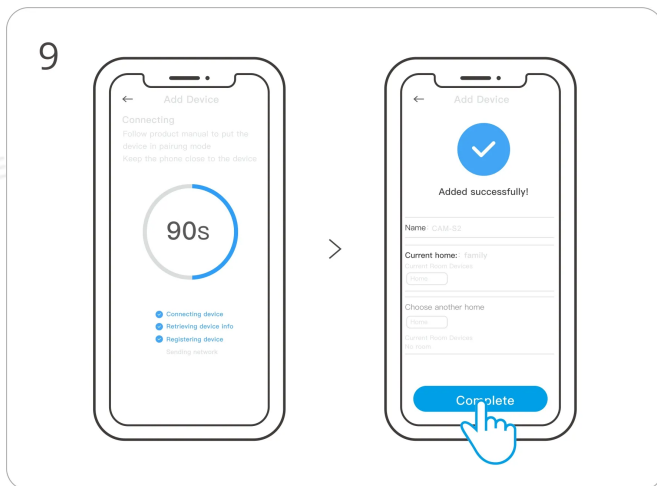
Check Wi-Fi LED indicator flashing status  
(Two short and one long flashes).



Wait for the device to be found and connected.

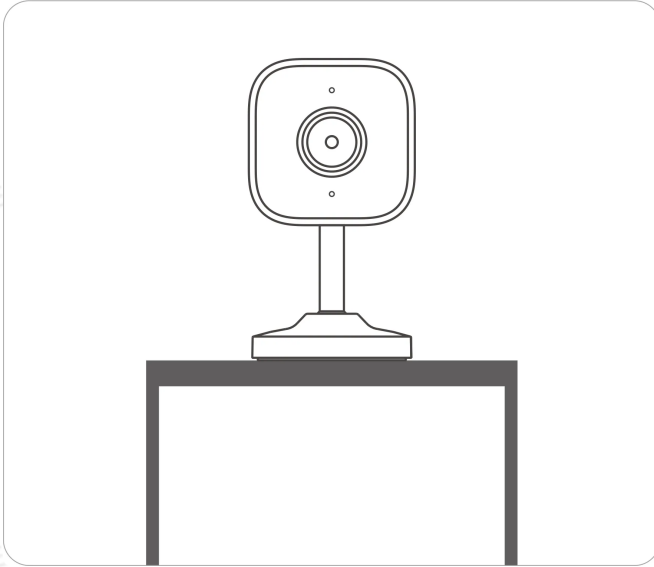


Select the "Wi-Fi" network and enter the password.

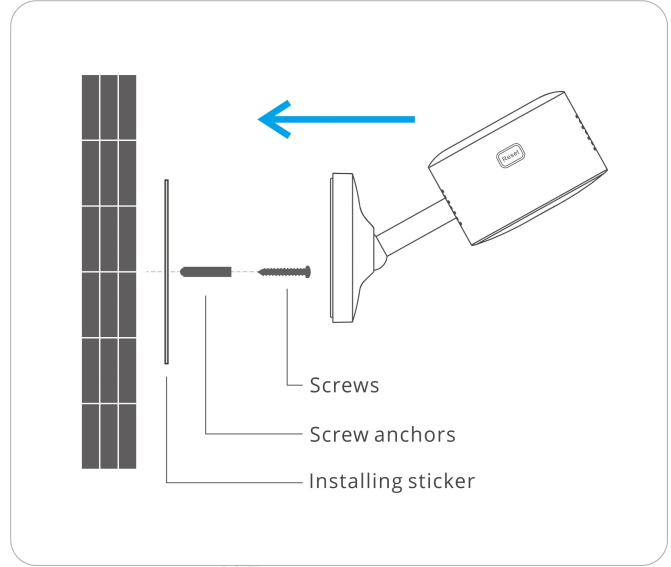


Device was added completely.

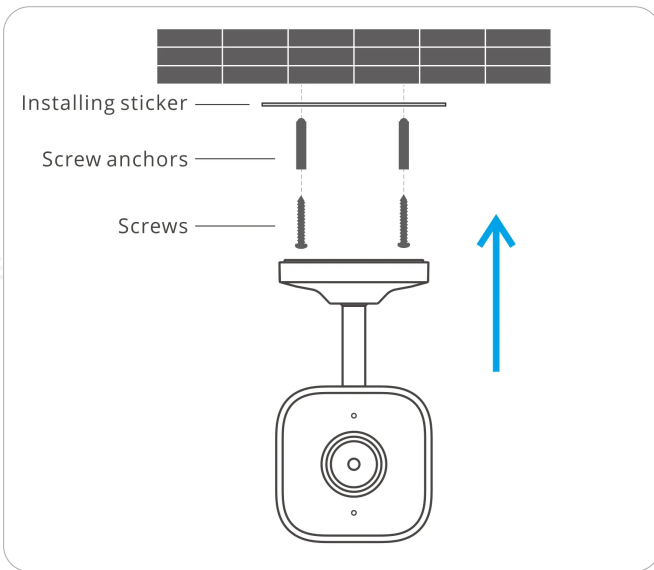
# Installation



①



②



③

This device can be placed on a desktop (Figure ①), mounted on a wall (Figure ②), or installed on the ceiling (Figure ③).

## FCC compliance statement

1.This device complies with part 15 of the FCC Rules. Operation is subject to the following two conditions:

- (1) This device may not cause harmful interference, and
- (2) This device must accept any interference received, including interference that may cause undesired operation.

2.Changes or modifications not expressly approved by the party responsible for compliance could void the user's authority to operate the equipment.

Note: This equipment has been tested and found to comply with the limits for a Class B digital device, pursuant to part 15 of the FCC Rules. These limits are designed to provide reasonable protection against harmful interference in a residential installation. This equipment generates, uses and can radiate radio frequency energy and, if not installed and used in accordance with the instructions, may cause harmful interference to radio communications. However, there is no guarantee that interference will not occur in a particular installation. If this equipment does cause harmful interference to radio or television reception, which can be determined by turning the equipment off and on, the user is encouraged to try to correct the interference by one or more of the following measures:

- Reorient or relocate the receiving antenna.
- Increase the separation between the equipment and receiver.
- Connect the equipment into an outlet on a circuit different from that to which the receiver is connected.
- Consult the dealer or an experienced radio/TV technician for help.

FCC Radiation Exposure statement:

The device has been evaluated to meet general RF exposure requirement, This equipment should be installed and operated with a minimum distance of 20 cm between the radiator and your body.

## EU Declaration of Conformity

Hereby, Shenzhen Sonoff Technologies Co., Ltd. declares that the radio equipment type CAM-S2 is in compliance with Directive 2014/53/EU. The full text of the EU declaration of conformity is available at the following internet address: <https://sonoff.tech/compliance/>

## For CE frequency

EU Operating Frequency Range:



Wi-Fi: 802.11 b/g/n20 2412–2472 MHz, 802.11 n40: 2422–2462 MHz

BLE: 2402–2480 MHz

**EU Output Power:**

Wi-Fi 2.4G ≤ 20dBm

BLE ≤ 10dBm

Scatola	Manuale	Neto	Borsa
PAP 21	PAP 22	PAP 22	LDPE 4
Carta	Carta	Carta	Plastica
RACCOLTA DIFFERENZIATA			
Verifica le disposizioni del tuo Comune. Separa le componenti e conferiscile in modo corretto.			

## WEEE Disposal and Recycling Information



WEEE Disposal and Recycling Information All products bearing this symbol are waste electrical and electronic equipment (WEEE as in directive 2012/19/EU) which should not be mixed with unsorted household waste. Instead, you should protect human health and the environment by handing over your waste equipment to a designated collection point for the recycling of waste electrical and electronic equipment, appointed by the government or local authorities. Correct disposal and recycling will help prevent potential negative consequences to the environment and human health. Please contact the installer or local authorities for more information about the location as well as terms and conditions of such collection points.

# SONOFF

Manufacturer: Shenzhen Sonoff Technologies Co., Ltd.

Address: 3F & 6F, Bldg A, No. 663, Bulong Rd, Shenzhen, Guangdong, China

ZIP code: 518000

Service email: support@itead.cc

Website: sonoff.tech

Made in China



FR

Cet appareil,  
ses accessoires  
et cordons se  
recyclent

À DÉPOSER  
EN MAGASIN



OU

À DÉPOSER  
EN DÉCHÈTERIE



Points de collecte sur [www.quefairedemesdechets.fr](http://www.quefairedemesdechets.fr)  
Privilégiez la réparation ou le don de votre appareil !

